

MiniCase-1

Small plastic cases with smart non-screw snap-in assembly for electronics prototyping and small series.

AVAILABLE CASE OPTIONS

Module	PC-Board Size	Accessories
MiniCase-1	50mm x 60mm	Bread board PCB 2.54mm / 1/10" grid, 50x60mm
MiniCase-2	100mm x 60mm	Bread board PCB 2.54mm / 1/10" grid, 100x60mm

The chip45 MiniCases are plastic enclosures for electronic prototypes and small series. It is being used e.g. for our CrumbControl-1 (<http://go.chip45.com/crumbcontrol-1-1.4>) module.

The MiniCases are available in two different sizes (see table above and dimension drawings on the next pages) and we provide suitable bread board pcbs for rapid prototyping.

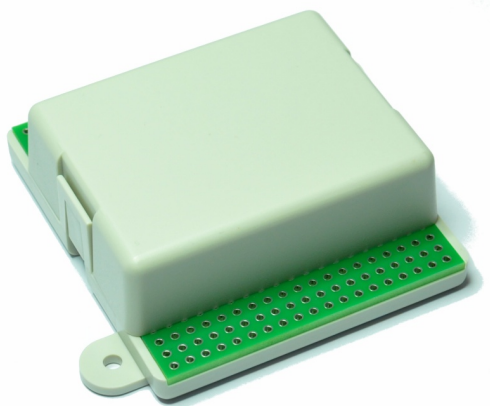
The cases consist of one bottom part, which holds the pcb (fixed through one or two bolts) and one top part, which snaps into two clips of the bottom part. No screws are necessary for mounting the case! When assembled, the top part also locks the pcb in it's position (together with the bottom part bolts).

The top part is smaller than the bottom part, leaving two areas of the pcb easily accessible for connectors, switches, leds, etc. without machining/processing of the case at all.

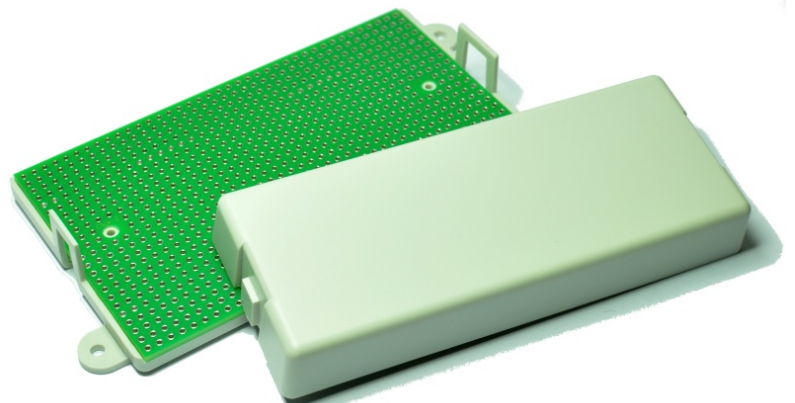
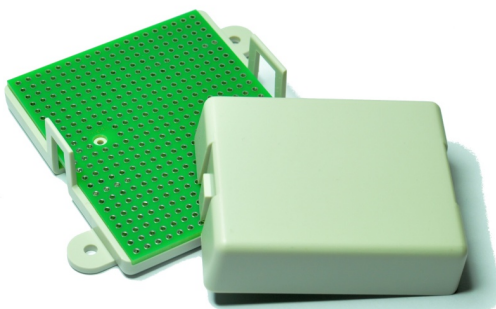
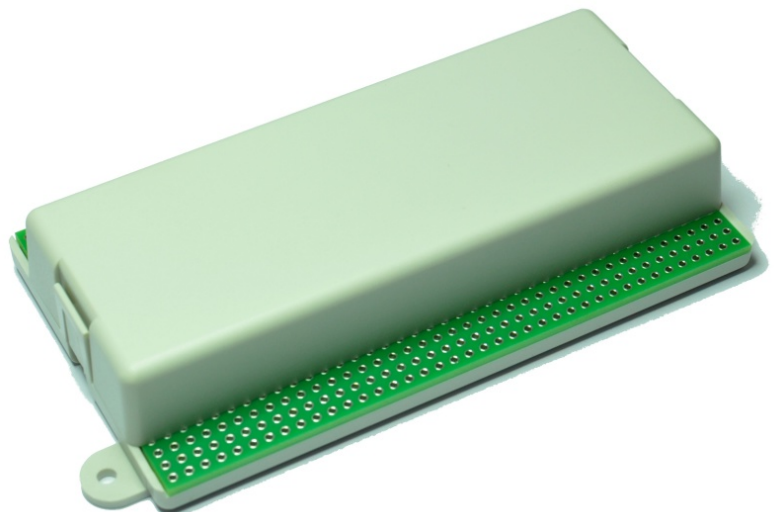
We can provide CNC machined, customized versions of the case, if required. Please contact us in that case at <http://www.chip45.com> or info@chip45.com.

PICTURES

MiniCase-1

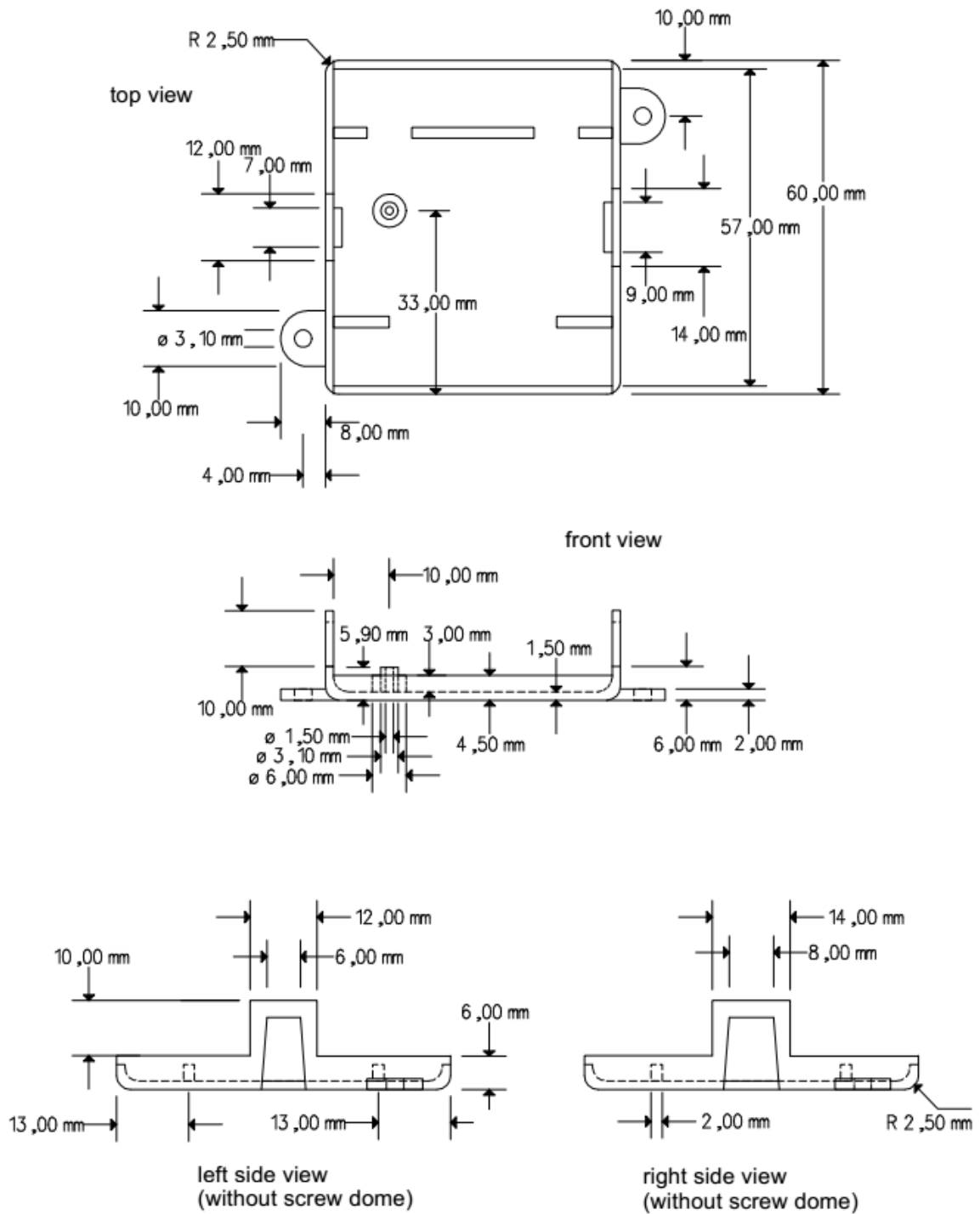


MiniCase-2

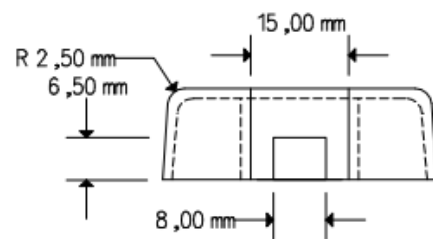
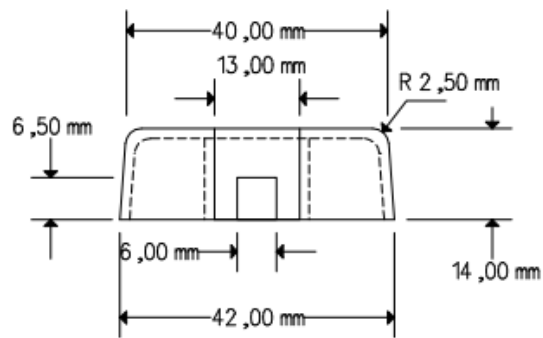
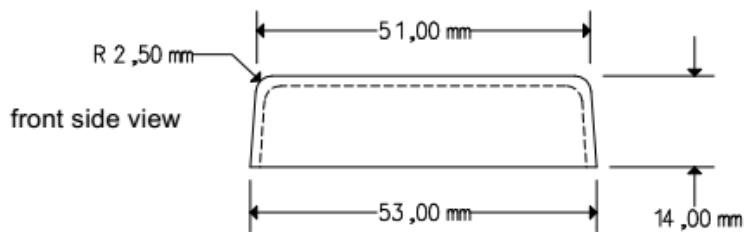
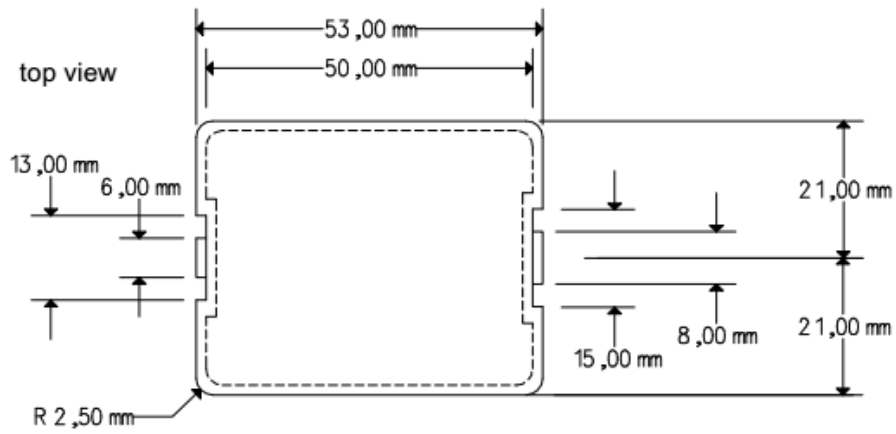


MiniCase-1 Dimension Drawing

Size of PC board:
50 x 60mm
thickness: 1,5 ... 1,6mm



Size of PC board:
50 x 60mm
thickness: 1,5 ... 1,6mm

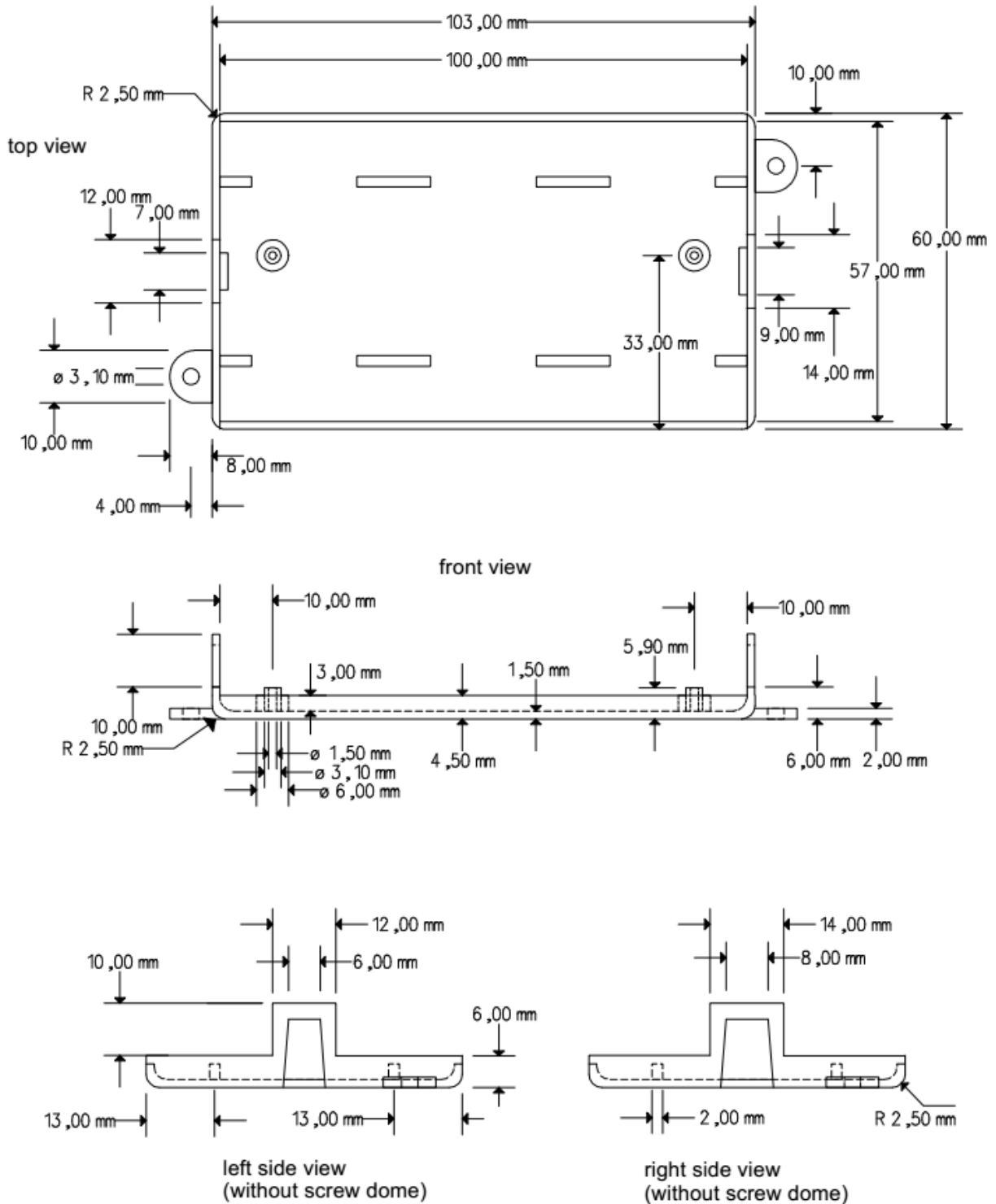


left side view

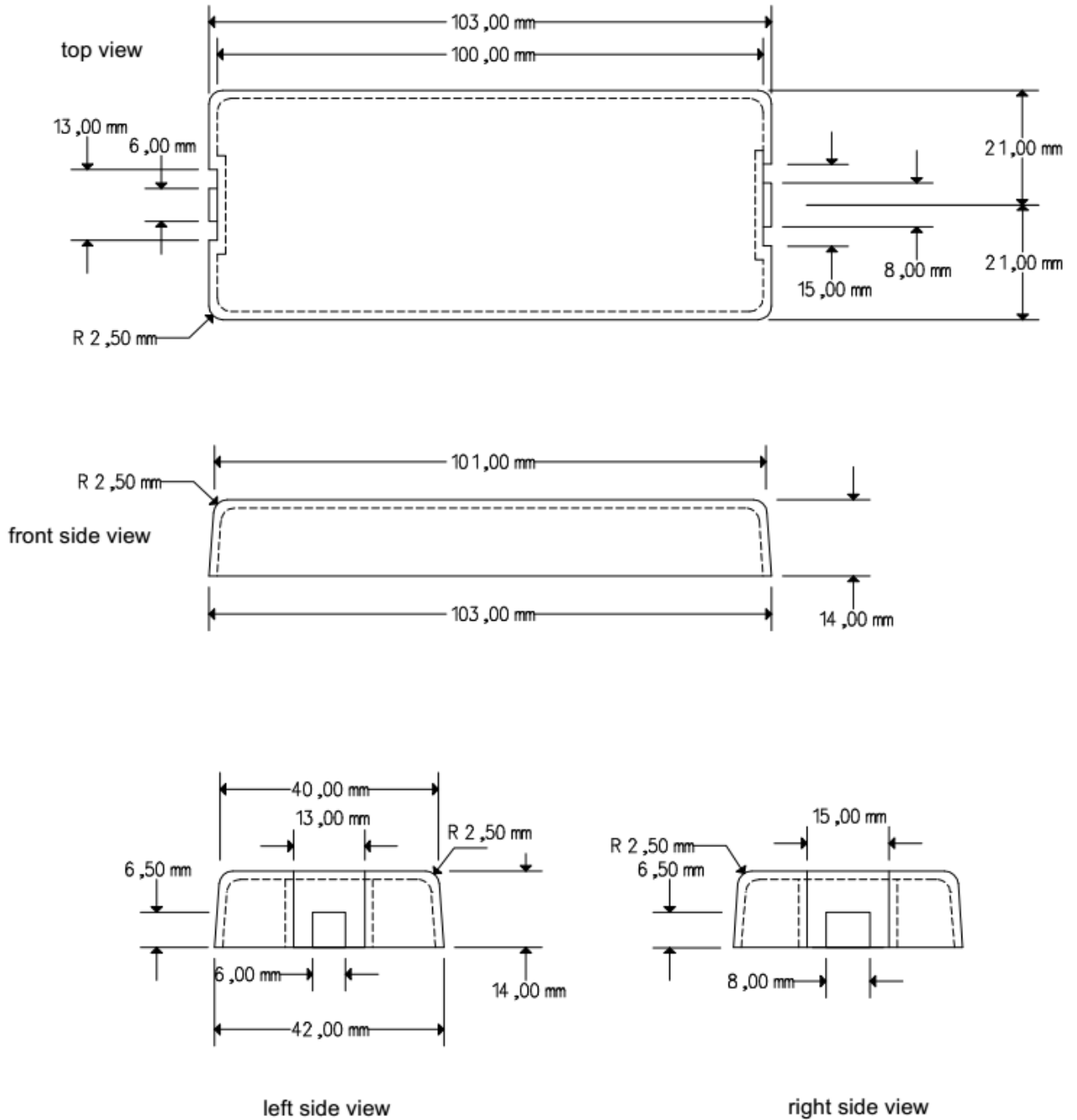
right side view

MiniCase-2 Dimension Drawings

Size of PC board:
100 x 60mm
thickness: 1,5 ... 1,6mm



Size of PC board:
 100 x 60mm
 thickness: 1,5 ... 1,6mm



DISCLAIMER

In this manual are descriptions for copyrighted products that are not explicitly indicated as such. The absence of the trademark (™) and copyright (©) symbols does not imply that a product is not protected. Additionally, registered patents and trademarks are similarly not expressly indicated in this manual.

The information in this document has been carefully checked and is believed to be entirely reliable. However, chip45 GmbH & Co. KG assumes no responsibility for any inaccuracies. chip45 GmbH & Co. KG neither gives any guarantee nor accepts any liability whatsoever for consequential damages resulting from the use of this manual or its associated product. chip45 GmbH & Co. KG reserves the right to alter the information contained herein without prior notification and accepts no responsibility for any damages which might result.

Additionally, chip45 GmbH & Co. KG offers no guarantee nor accepts any liability for damages arising from the improper usage or improper installation of the hardware or software. chip45 GmbH & Co. KG further reserves the right to alter the layout and/or design of the hardware without prior notification and accepts no liability for doing so.

© Copyright 2013 chip45 GmbH & Co. KG, D-35440 Linden.

Rights - including those of translation, reprint, broadcast, photomechanical or similar reproduction and storage or processing in computer systems, in whole or in part - are reserved. No reproduction may occur without the express written consent from chip45 GmbH & Co. KG.

CONTACT INFORMATION

Address:	chip45 GmbH & Co. KG Am Pfad 8 D-35440 Linden Germany
Ordering Information:	+49 (6403) 9299-406 info@chip45.com
Technical Support:	+49 (6403) 9299-406 support@chip45.com
Fax:	+49 (6403) 9253-50
Web Site:	http://www.chip45.com