

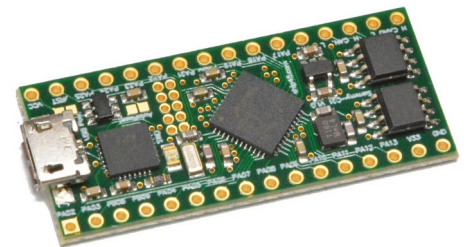
OEM module with Atmel/Microchip ATSAMC21 processor, USB UART and dual CAN.

Available Options

| Module | Processor | Flash | RAM | Peripherals on Module |
|----------------|---------------|-------|-----|--|
| Sammy-C21 V1.0 | SAMC21G18A-MU | 256kB | 32k | <ul style="list-style-type: none"> - 3.3V LDO voltage regulator - CP2102 USB UART converter (micro USB connector) - dual ATA6561 CAN transceiver - status LED - 16MHz main crystal - 32768Hz clock crystal - 10pin standard SWD program and debug connector |

Module Overview

The Sammy-C21 module comes in a standard DIL32 form factor. Based on Atmel/Microchip's SAMC21G18A microcontroller in 48pin package, the modules provides many standard peripherals, like UART, SPI, TWI/I²C, Timers, PWM, ADC, DAC, analog comparator, watchdog and many more. Special feature of the SAMC21 are two integrated Controller Area Network (CAN) controllers complemented with two industry standard CAN transceivers, thus allowing the Sammy-C21 to directly connect to CAN busses. For simple host PC connection a USB UART converter with micro USB connector is present. Further components are a 5V->3.3V voltage regulator, 16MHz main crystal, 32768Hz clock crystal, standard SWD program and debug connector and a status LED. The module can be ordered with a preloaded chip45bootSAM USB bootloader, see below.



Microcontroller

Atmel/Microchip's SAMC21G18A provides a powerful Cortex-M0+ CPU running at up to 48MHz, 256kB flash memory, 8kB flash for EEPROM emulation, 32kB SRAM main memory plus an extensive set of microcontroller peripherals (see table right). For a full description of the SAMC21G18A plus data sheet and comprehensive application notes, see the following link:

<http://www.microchip.com/wwwproducts/en/ATSAMC21G18A>

Parametrics

| Name | Value |
|--|-------------------------|
| Part Family | SAMC21 |
| Max CPU Speed MHz | 48 |
| Program Memory Size (KB) | 256 |
| SRAM (KB) | 32 |
| Auxiliary Flash (KB) | 8 |
| Temperature Range (C) | -40 to 125 |
| Operating Voltage Range (V) | 2.7 to 5.5 |
| Direct Memory Access Channels | 6 |
| SPI | 6 |
| I2C | 6 |
| Hardware Touch Peripheral | PTC |
| Peripheral Pin Select / Pin Muxing | Yes |
| Number of CAN modules | 2 |
| Type of CAN module | CAN-FD |
| ADC Input | 12 |
| Max ADC Resolution (Bits) | 12 |
| Max ADC Sampling Rate (ksps) | 1000 |
| Input Capture | 10 |
| Standalone Output Compare/Standard PWM | 10 |
| Motor Control PWM Channels | 14 |
| Max 16-bit Digital Timers | 5 |
| Parallel Port | GPIO |
| Number of Comparators | 4 |
| Internal Oscillator | 32kHz, 32kHz ULP, 48MHz |
| Hardware RTCC/RTC | Yes |
| Max I/O Pins | 52 |
| Pincount | 64 |

Expansion Headers

All relevant MCU signals are available on two 16-pin expansion headers with standard 2.54mm (1/10") spacing and hole size to fit almost any pin or receptacle headers. With pin headers, the module can be plugged into solderless breadboard or wirewrap PCBs easily. See „Pinout and Dimensions“ for signal and pin configuration.

USB Interface

The USB interface is based on a CP2102 USB UART converter chipset by Silicon Labs. It is connected to SAMC21's SERCOM5 UART (PB02, PB03) and once connected to a PC or MAC, it will show up as virtual serial COM port. Driver installation is not necessary on current Windows or OS X version, but for older systems a virtual COM port driver is available.

See the following link for details on the CP2102 (e.g. data sheet) and optional virtual COM port driver:

<https://www.silabs.com/products/interface/usb-bridges/classic-usb-bridges/device.cp2102>

CAN Interface

The SAMC21G18A provides two integrated CAN controllers, which provide communication according to ISO 11898-1 (Bosch CAN specification 2.0 part A,B) and to Bosch CAN FD specification V1.0. The on-chip CAN controllers are supplemented by two ATA6561 CAN transceivers, which are fully ISO 11898-2,-5, SAE J2284 compliant and CAN FD ready. For detailed information about the CAN transceiver (data sheet, application notes, quickstart guides), see the following link:

<http://www.microchip.com/wwwproducts/en/ATA6561>

Standby Mode

When the STBY pin is driven high or left floating (internal pull-up resistor), the CAN transceivers are in standby mode. In this mode the transceivers are not able to transmit or receive data via the bus lines.

The transmitter and the high-speed comparator (HSC) are switched off to reduce current consumption and only the low-power wake-up comparator (WUC) monitors the bus lines for a valid wake-up signal. A signal change on the bus from "Recessive" to "Dominant" followed by a dominant state longer than t_{wake} switches the RXD pin to low to signal a wake-up request to the microcontroller. See data sheet for details.

SAMC21G18A pin PA27 is used to control the STBY pins of both CAN transceivers.

Clock Options

The SAMC21G18A microcontroller provides a flexible clock system for clocking the CPU core and the peripherals. Beside several internal RC oscillators, two external clock options can be used and are already mounted on the SammyC21 module. First one is a 16MHz crystal, which can be used to clock the internal PLL system and the consecutive clock generators. The second one is a 32768Hz watch crystal as precise clock source for the internal realtime clock (RTC) timer. See SAMC21G18A data sheet for further information.

Status LED

As simple yet effective status indicator, a low-power LED is onboard and connected to pin PA28 of the ATSAMC21G18A microcontroller. Driving this pin to high will turn on the LED.

Power Supply

The Sammy-C21 module operates from 4.5V to 5.5V through VCC pin or from USB bus power (see „Configuration Jumpers“ for details). This voltage directly powers the CAN side of the on-board CAN bus transceivers. The remaining parts of the module are powered with 3.3V from the on-board LDO, hence all external GPIO signals operate on 3.3V levels. The 3.3V voltage from the LDO is also available at the V33 pin and can be used to supply external circuitry connected to the Sammy-C21. If using this, always keep the maximum current as well as (even more important!) the maximum power dissipation of the LDO in mind. The LDO provides a maximum of 600mA output current, but when you plan to e.g. use the module up to 70°C environment temperature, the maximum power dissipation drops to approx. 430mW, thus limiting the output current to approx. 250mA when operated at stable 5V VCC. Ask us, if you are unsure about your planned configuration.

Note 1: The LDO could in principle operate on a VCC voltage from ~3.7V to 6.0V to generate a proper 3.3V output voltage, but since the CAN bus transceivers are operated from VCC directly, its power supply voltage range applies to the whole module.

Note 2: Since the ATSAMC21G18A allows 5V operation also, it is possible to operate the whole module at 5V by removing the on-board 3.3V LDO. This is useful for 5V-only applications with external 5V circuitry. Ask us in advance, if you want to purchase a 5V only module version. In that case 5V have to be connected external to both VCC and V33 pins.

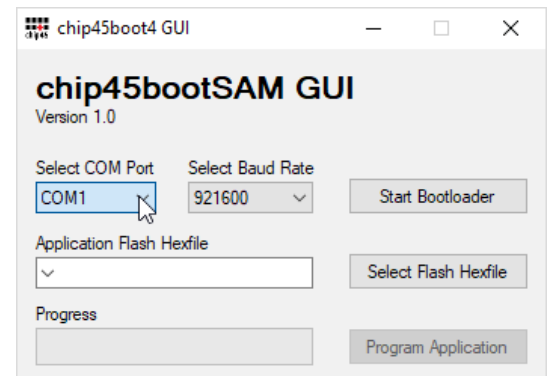
Preloaded chip45bootSAM Bootloader

You can order the module with preloaded chip45bootSAM bootloader in our shop. The bootloader provides application flash programming through USB (virtual COM port). You can download the Windows GUI executable from this link:

http://www.chip45.com/download/chip45bootSAM_GUI.zip

Before using the bootloader and GUI, it is good to close the auto-reset jumper J101, since it allows the GUI to start the bootloader automatically. See below for jumper settings and jumper location.

The picture right shows a screenshot of the GUI. Select the proper COM port, do not change the baudrate setting, since it is fixed set to 921600 baud in the bootloader and press „Start Bootloader“. If J101 is set, the GUI will reset the target, bootloader will start and will connect to the GUI. If connection is successful, the „Start Bootloader“ button will light green and text will change to „Exit Bootloader“. Also the onboard LED of the Sammy module will light green. Then select the application hex file to be programmed and press „Program Application“. The progress bar should indicate progress and after successful programming, the „Program Application“ button will light green as well.



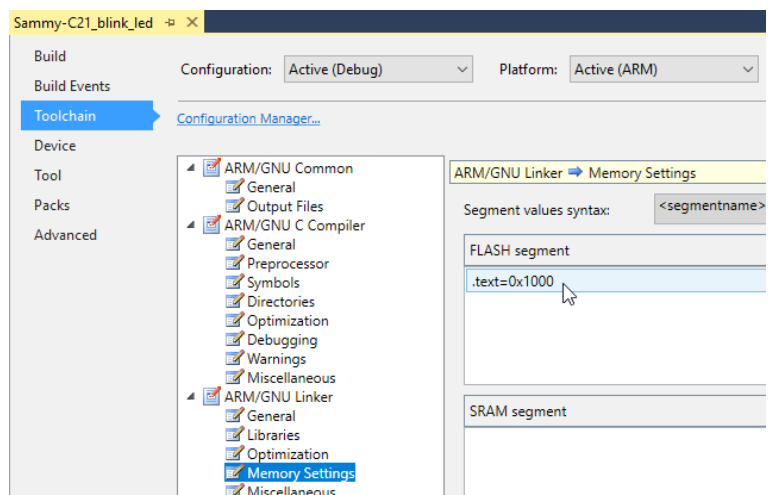
Finally press the „Exit Bootloader“ button and your application will be started. If you will later reset or power cycle the module, the onboard will light green for about 3 seconds, indicating, that the bootloader was started and is waiting for the GUI to connect. If no connection attempt is made, the bootloader will timeout after 3 seconds, LED goes off and application is started. So using the bootloader will always introduce a delay of about three seconds before your application will be started.

Make sure to read the next chapter on how to modify you Atmel Studio 7 application project to be bootloader compatible.

Atmel Studio 7 Project Settings for Bootloader Operation

Other than e.g. the AVR ATmega or Xmega devices, the bootloader memory area is not at the top of flash memory, but starts at bottom of flash at address 0x0000. Since this is also the normal application start address, you have to modify the Atmel Studio 7 project settings of your application to let the application be located by the linker at a higher address after the bootloader.

Open the project settings of your Atmel Studio 7 project and go to Toolchain → ARM/GNU Linker → Memory Settings and add the following entry for the FLASH segment:



```
.text=0x1000
```

This will locate your application at start address 0x1000, thus leaving 4kbytes of space for the bootloader at bottom of flash. Recompile your application and check the generated hex file. The first hex record should start at address 0x1000 instead of 0x0000. The following screenshot shows an example of a proper hex file with the address 0x1000 highlighted:

```
:10100000682000202D110000291100002911000086  
:1010100000000000000000000000000000000000D0
```

The bootloader checks the to-be-programmed addresses and will not overwrite itself.

Preloaded Duet3D Bootloader

You can order the Sammy-C21 module with Duet3D bootloader preloaded:
https://www.chip45.com/products/sammy-c21-1.0_atmel_smart_arm_sam_module_samc21_usb_dual_can_duet3d.php



Please check the following resources for more information:

<https://www.duet3d.com/>

<https://forum.duet3d.com/topic/16448/can-fd-generic-io>

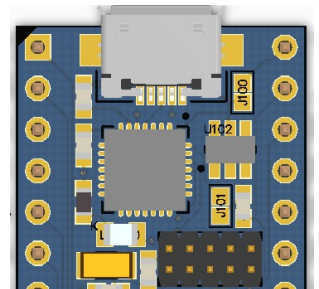
Configuration Jumpers

The Sammy-C21 module provides two configuration jumpers, which are carried out as solder-bridges and need to be closed by a small dot of solder.

J100: Close this jumper to power the on-board LDO from USB bus power.

J101: Close this jumper to enable bootloader auto-reset feature.

See picture right for location of the two jumpers.



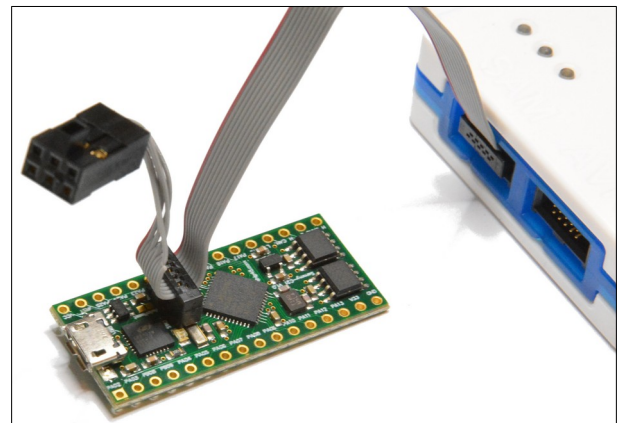
Programming and Debugging

The Sammy-C21 module provides a standard 10-pin Cortex SWD program and debug connector, which directly connects to many programmers and debuggers. Atmel/Microchip provides the ATMEL-ICE programmer/debugger in different configurations in terms of packaging with adapter cables (see <http://www.atmel.com/tools/atatmel-ice.aspx>). For programming and debugging the Sammy-C21 module, the ATMEL-ICE-BASIC is sufficient (providing a standard 10-pin SWD cable plus 6-pin ISP connector for e.g. Atmel/Microchip ATmega, ATtiny, Xmega, etc. devices).

See picture right for proper connection of the ATMEL-ICE SWD cable to the Sammy-C21 module.

The ATMEL-ICE is available in our online shop:

[sam_arm_cortex_avr_atmega_xmega_sw_d_isp_pdi_jtag_programmer_debugger.php](http://www.chip45.com/sam_arm_cortex_avr_atmega_xmega_sw_d_isp_pdi_jtag_programmer_debugger.php)



Software Development

Atmel Studio 7

Atmel Studio 7 is the integrated development platform (IDP) for developing and debugging all AVR® and SAM microcontroller applications. The Atmel Studio 7 IDP gives you a seamless and easy-to-use environment to write, build and debug your applications written in C/C++ or assembly code. It also connects seamlessly to the debuggers, programmers and development kits that support AVR and SAM devices.



Additionally, Studio includes Atmel Gallery, an online app store that allows you to extend your development environment with plug-ins developed by Microchip as well as third-party tool and embedded software vendors. Studio 7 can also seamlessly import your Arduino sketches as C++ projects, providing a simple transition path from Makerspace to Marketplace.

See <http://www.microchip.com/development-tools/atmel-studio-7> for details and free download.

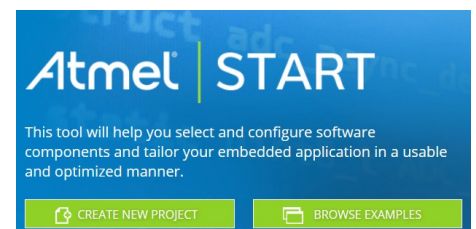
Features

- Support for 500+ AVR and SAM devices
- Vast source code library, including drivers, communication stacks, 1,600+ project examples with source code, graphic services and touch functionality through Advanced Software Framework (ASF)
- IDE extensions through Atmel Gallery, the online apps store, for development tools and embedded software from Microchip and third parties
- Tune capacitive touch designs, validate system performance, monitor power consumption, and real-time data and trace graphing with Atmel QTouch Composer
- Configure and test the performance of wireless designs with the Wireless Composer running on the target
- Write and debug C/C++ and assembly code with the integrated compiler
- Advanced debugging features include complex data breakpoints, nonintrusive trace support (SAM3 and SAM4 devices), statistical code profiling, interrupt trace/monitoring, polled data tracing (Cortex-M0+ devices), real-time variable tracking with optional timestamping.
- Integrated editor with visual assist
- Project wizard allowing projects created from scratch or from a large library of design examples
- In-system programming and debugging provides interface to all Atmel in-circuit programmers and debuggers
- Create transparent debug views into CPU and peripherals for easy code development and debugging
- Full chip simulation for an accurate model of CPU, interrupts, peripherals, and external stimuli

Atmel START

Another starting point for Atmel SAM software development is Atmel START - an online tool, which will help you select and configure software components and tailor your embedded application in a usable and optimized manner.

To get started you can either create a new project from scratch or open an existing example. In both cases you can configure your software components and device settings such as clocks and pin layout. When you are done, you can export your project and open it using your favourite IDE for further development.



For more informations and video tutorials, see <http://start.atmel.com/>.

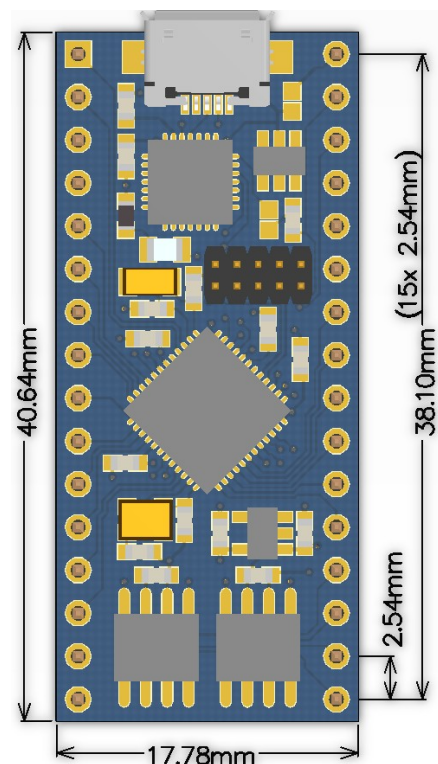
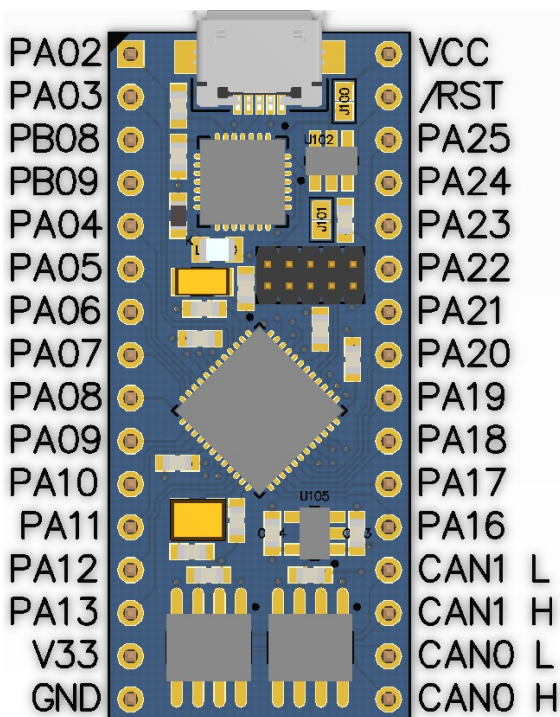
Operating Characteristics

The following table shows the main characteristics for reference. Always refer to the components data sheets for detailed description of electrical and thermal characteristics.

| Symbol | Parameter | Condition | Min | Typ | Max | Units | |
|--------|--|----------------------------------|-----|-----|-----|-------|--|
| Vcc | External Supply Voltage | | 4.5 | 5.0 | 5.5 | V | |
| V33 | Internal Supply Voltage | | | 3.3 | | V | |
| Icc | Power Supply Current (Icc strongly depends on MCU activity, like frequency, power saving modes, etc. as well as external circuitry, io pin input and output current, etc. The values denoted here are for reference only and can differ from final application values.) | MCU ACTIVE | 3.4 | 5.0 | 5.4 | mA | |
| | | MCU IDLE | | 1.8 | | mA | |
| | | add per used CAN bus: | | | | | |
| | | CAN bus active (recessive state) | 2 | | 5 | mA | |
| | | CAN bus active (dominant state) | 20 | 50 | 70 | mA | |
| T | Operating Temperature | | -40 | | +85 | °C | |

Pinout and Dimensions

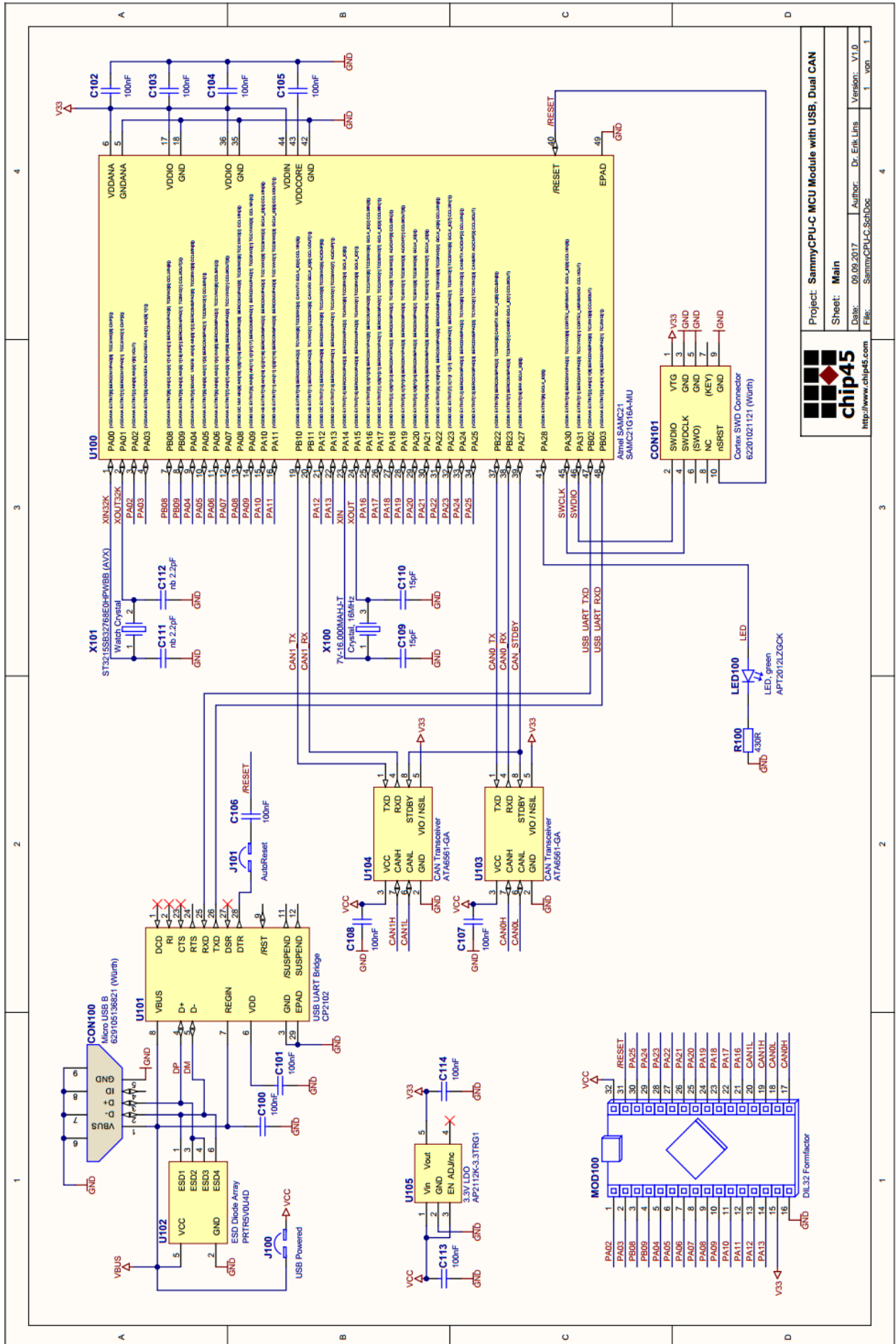
Check ATSAMC21G18A data sheet for mapping of the MCU peripherals to GPIO signals.



Design and Handling Precautions

This module – just like any other semiconductor devices – is susceptible to damage by ESD. Suitable precautions should be taken when handling and transporting devices. The possible damage to devices depends on the circumstances of the handling and transporting, and the nature of the device. The extent of damage can vary from immediate functional or parametric malfunction to degradation of function or performance in use over time. Devices suspected of being affected should be replaced.

Module Schematics



| | |
|---|-----------------------|
| Project: SammyCPU-C MCU Module with USB, Dual CAN | |
| Sheet: Main | Author: Dr. Erik Lins |
| Date: 09.09.2017 | Version: V1.0 |
| File: SammyCPU-C_SchDoc | |



http://www.chip45.com

Declaration of Electro Magnetic Conformity of the CHIP45 „Sammy-C21“

CHIP45 embedded microcontroller modules (henceforce products) are designed for installation in electrical appliances or as dedicated evaluation boards (i.e.: for use as a test and prototype platform for hardware/software development) in laboratory environments.



Caution:

CHIP45 products lacking protective enclosures are subject to damage by ESD and, hence, may only be unpacked, handled or operated in environments in which sufficient precautionary measures have been taken in respect to ESD-dangers. It is also necessary that only appropriately trained personnel (such as electricians, technicians and engineers) handle and/or operate these products. Moreover, CHIP45 products should not be operated without protection circuitry if connections to the product's pin header rows are longer than 3m.

CHIP45 products fulfill the norms of European Union's Directive for Electro Magnetic Conformity only in accordance to the descriptions and rules of usage indicated in this document (particularly in respect to the pin header row connectors, power connector and serial interface to a host-PC).

Implementation of CHIP45 products into target devices, as well as user modifications and extensions of CHIP45 products, is subject to renewed establishment of conformity to, and certification of, Electro Magnetic Directives. Users should ensure conformance following any modifications to the products as well as implementation of the products into target systems.

DISCLAIMER

In this manual are descriptions for copyrighted products that are not explicitly indicated as such. The absence of the trademark (™) and copyright (©) symbols does not imply that a product is not protected. Additionally, registered patents and trademarks are similarly not expressly indicated in this manual.

The information in this document has been carefully checked and is believed to be entirely reliable. However, chip45 GmbH & Co. KG assumes no responsibility for any inaccuracies. chip45 GmbH & Co. KG neither gives any guarantee nor accepts any liability whatsoever for consequential damages resulting from the use of this manual or its associated product. chip45 GmbH & Co. KG reserves the right to alter the information contained herein without prior notification and accepts no responsibility for any damages which might result.

Additionally, chip45 GmbH & Co. KG offers no guarantee nor accepts any liability for damages arising from the improper usage or improper installation of the hardware or software. chip45 GmbH & Co. KG further reserves the right to alter the layout and/or design of the hardware without prior notification and accepts no liability for doing so.

© Copyright 2017 chip45 GmbH & Co. KG, 35396 Gießen, Germany.

Rights - including those of translation, reprint, broadcast, photomechanical or similar reproduction and storage or processing in computer systems, in whole or in part - are reserved. No reproduction may occur without the express written consent from chip45 GmbH & Co. KG.

CONTACT INFORMATION

Address: chip45 GmbH & Co. KG, Möserstraße 43, 35396 Gießen, Germany
Ordering Information: +49 (641) 92338172, info@chip45.com
Technical Support: +49 (641) 92338172, support@chip45.com
Fax: +49 641) 92338170
Web Site: <http://www.chip45.com>